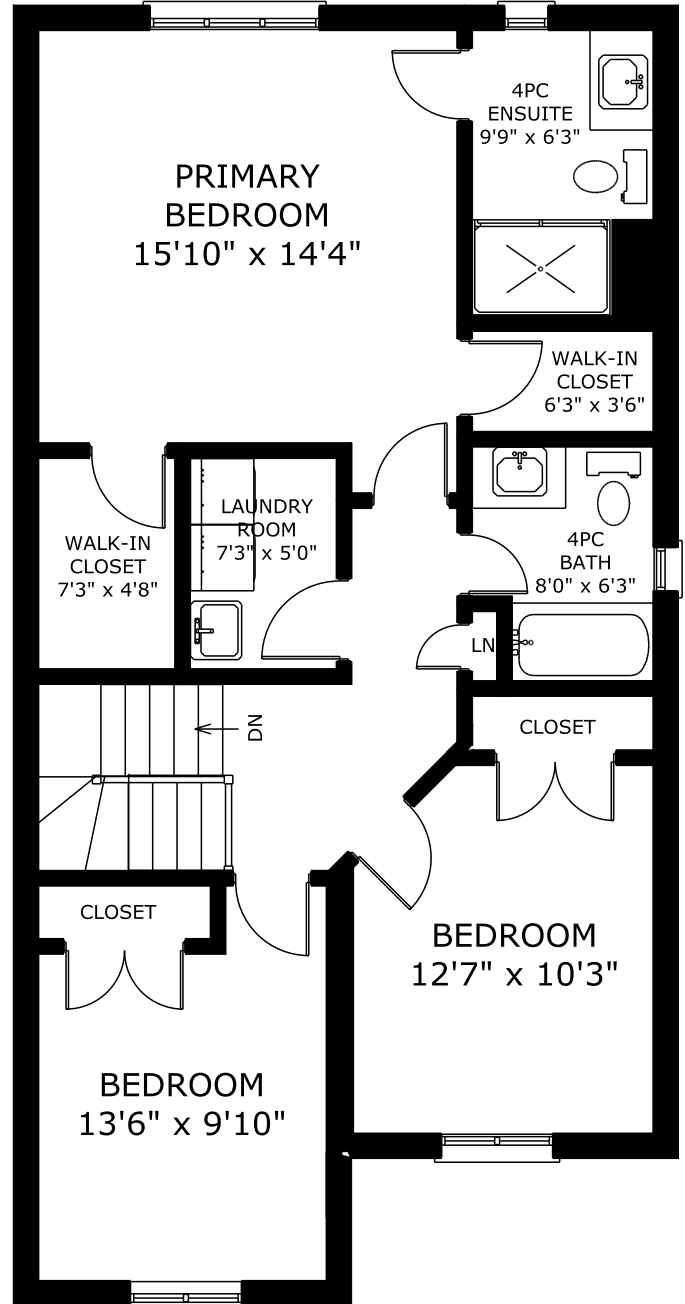
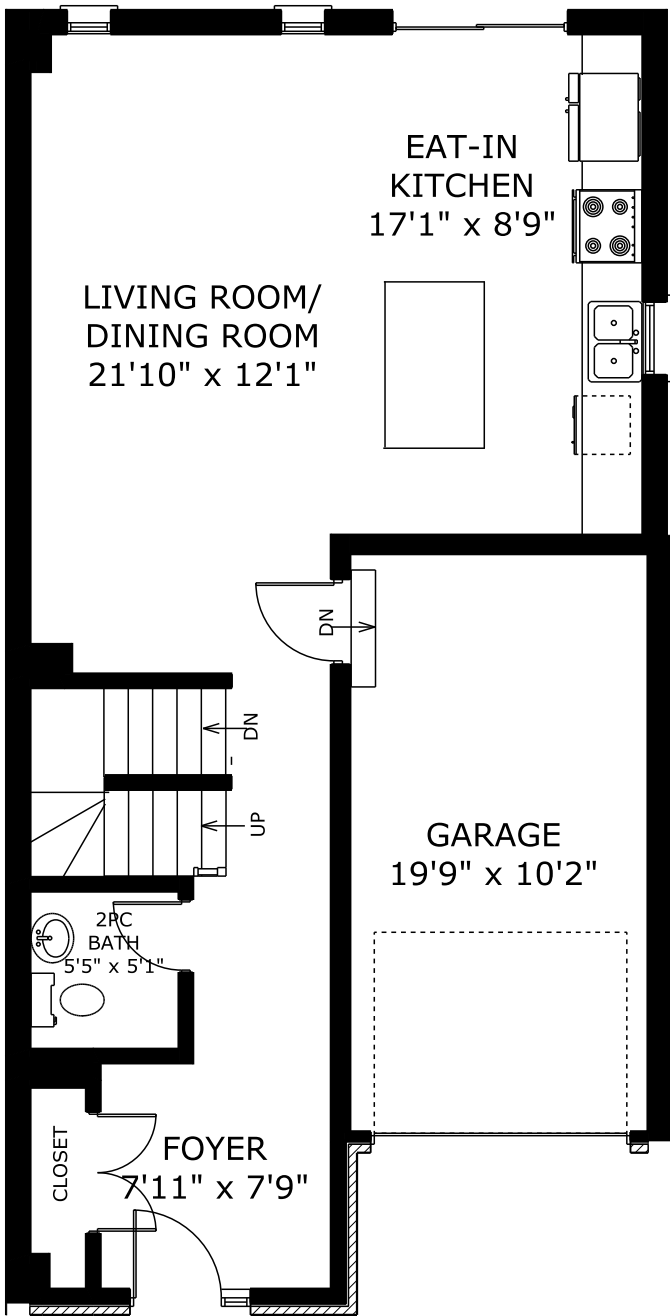


15 LINDSAY WAY,  
GRIMSBY



PEACH TREE MEASURING   
JULY 2021  
(289)339-8733

MAIN FLOOR  
726 SQ.FT

SECOND FLOOR  
927 SQ.FT

MAIN FLOOR WITH GARAGE  
952 SQ.FT

**ROOM SIZES SHOULD BE CONSIDERED APPROXIMATE  
SQUARE FOOTAGE IS BASED ON EXTERIOR  
MEASUREMENTS.**